

The Overlea Community Association presents

The 2nd Annual

ArtsFest

OVERLEA 2017

Paintings, Photography, Sculpture, Film, Music,
Performance, Demonstrations, Art vendors,
Family Art Activities & MORE!

www.OverleaOnline.org/ArtsFest

Music by



Sherri Robbins



Josie Baltimore

Spoken Word by



Slangston Hughes



Marie Abate



Jessica Lynn Dotson



Fred Collins

The Lushpockets

The Lushpockets

Special Guest Artist

A Benefit Event for
"Nature Connections"
Program at the
Natural History Society

Family Art Activities with
Artist & Craftsman Supply
The Artists' Corner
Holt Park Center for the Arts
& Rosedale Public Library



Ed Gross

Food & Refreshments by



Dessert
at
Jessica's



Roadside Cantina

Sat. May 13th 10am-6pm
Natural History Society of MD
6908 Belair Rd., 1 mile south of 695
\$3 donation - Free Parking - Handicapped Accessible

Sponsored by a grant from
Baltimore County Government &



ArtsFest

OVERLEA
2017

WELCOME TO THE OVERLEA ARTSFEST!

Thank you for supporting the 2nd annual Overlea ArtsFest, brought to you by the Overlea Community Association (OCA). This exciting celebration of visual and performing arts is made possible by generous grants from Baltimore County Government, and by Rosedale Federal Savings & Loan Association.



THE CITIZENS OF
BALTIMORE COUNTY



Your neighbor.
Your guide.
Your bank.

We invite you to learn more about the Overlea community. Community organized events like the Overlea ArtsFest, the Overlea Farmer's Market and the Christmas Tree Lighting celebration are part of the OCA's plan to enhance the experience of living in our community, and showcase its amenities to those from other neighborhoods. Go to www.OverleaRocks.org to see all that Overlea has to offer.

The OCA partners with the Natural History Society for many of its gatherings and events. The NHS offers year-round "citizen science" education programs for all ages including nature hikes, drawing classes, expert lectures and more. Their collection of fossils, insects, animals and minerals dates back to the early 1800s. For more info about the NHS, visit their website at www.marylandnature.org.



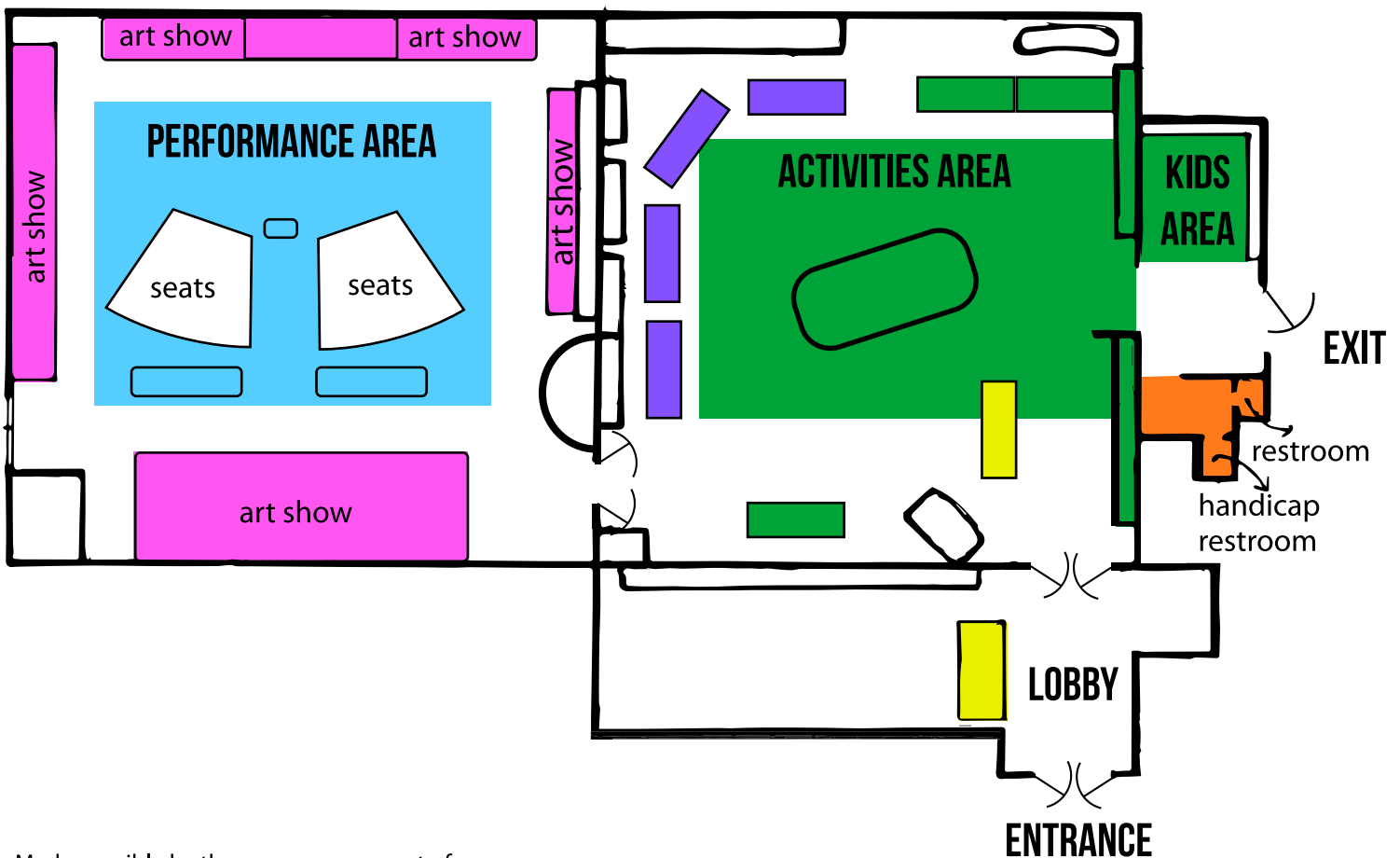
This virtual event program contains info on every aspect of the Overlea ArtsFest to help you fully enjoy the event - Performing Schedules, Activities and Demonstrations, Food Vendors, the Juried Art Show, even parking and lavatory facilities. Don't forget to cast your vote for your favorite artists in the People's Choice Awards! Our staff members will be on hand all day at the event to assist you, and you can sign up to get info on all of our great events through the year.

SEE YOU AT THE ARTSFEST!

Artsfest

OVERLEA
2017

NATURAL HISTORY SOCIETY OF MARYLAND



Made possible by the generous support of



THE CITIZENS OF
BALTIMORE COUNTY



Your neighbor.
Your guide.
Your bank.

KEY

- Art Show
- Vendors
- Activities & Demos
- Performing area
- Information
- Rest Rooms

SCAN ME!



Program available at <http://www.overleonline.org/artsfestprogram/>



PARKING INFORMATION

VENUE INFORMATION: Natural History Society (NHS), 6908 Belair Road, Baltimore, MD 21206 in Overlea, 1 mile south of 695 Exit 32A for US Route 1 South. The building is on the right side of Belair Road, between Chesley Avenue and Overlea Avenue. The NHS is handicap accessible.

Available Parking: There are 4 main parking areas for the ArtsFest festival. All parking areas are marked with yellow Event Parking signs, and manned with Scout volunteers to assist you.

NHS PARKING LOT: The NHS parking lot is being reserved for food trucks, food vendors, handicapped patrons, the guest artist, vendors and bands with equipment to unload.

KAYE'S PHARMACY PARKING LOT: Directly across Belair Road from the NHS, and next to Kaye's Pharmacy, is a colorful wall mural depicting butterflies and insects from this area; behind that is a county parking lot where you may park free of charge. Cross the street at the crosswalk at either corner.

ST. MICHAEL'S CHURCH PARKING LOT: Diagonally across Belair Road from the NHS is a large stone church, St. Michael the Archangel. Their parking lot is ½ block north of the church. Turn into the lot with the iron fencing around it and park. Do not block the driving paths through the parking lot. Cross the street at the crosswalk at Willow Avenue.

ST. JAMES LUTHERAN CHURCH PARKING LOT: The St. James parking lot is at 8 W. Overlea Avenue, directly adjacent to the NHS property. You can easily see it from the NHS building entrance. To reach the parking lot, exit the NHS parking lot by leaving on the Chesley Avenue side exit; turn left onto Chesley, go 1-1/2 blocks & turn left on Ashley, go 1 block and turn left on W. Overlea. Just before Spruce Avenue, turn left into one of their 2 parking areas. The NHS building is through the second parking lot and to the right. Walk down the wooden steps at the far corner of the parking lot and you will be at the Natural History Society entrance.

**** NOTE:** Chesley Avenue is one way going WEST. Do not turn right if you leave the parking lot by the Chesley Avenue exit. It is not an outlet to Belair Road.

OVERFLOW PARKING — GEDDES & CO. PARKING LOT: Two blocks north of the NHS at 7110 Belair Road, and on the same side of the street, is the Raymond Geddes & Co. building. Their lot is available all day for overflow parking.



Food Vendors

Outdoors – Natural History Society Parking Lot



Roadside Cantina

Zen West - Tacos, pulled pork sliders, chips & guacamole from the famous Tex-Mex restaurant in Belvedere Square.

www.zen-west.com



Dessert at Jessica's - Cookies, brownies, mini bundt cakes, cinnamon rolls and cold-brew coffee drinks by Chef Jessica Drake. www.dessertatjessicas.com



BSA Venture Scouting Crew #2727 - Hamburgers, cheeseburgers, turkey burgers, hot dogs, canned sodas, bottled water, chips & pretzels. The NHS is home base for this Venture Scout group of boys and girls.

<http://www.baltimorebsa.org/home/54196>

- Tables and chairs are provided outside in the food vendor area -

Standard and handicap-accessible lavatories are available inside the building and outside in the food vendor area.



DEMONSTRATIONS & ACTIVITIES

ACTIVITY ROOM

THE ARTISTS' CORNER - Live stained glass demonstrations and Q&A, plus info on classes and restoration work. Contact: Marty Vittek & Fran
www.ArtistsCornerStainedGlass.com

MARYLAND SCHOOL FOR THE BLIND - See and touch the student art projects on display, and learn about their state-of-the-art programs for blind & autistic children. Contact: Rachel Kollasch, www.marylandschoolfortheblind.org

KIDS' ART ACTIVITY TABLE #1 - sponsored by **ELMWOOD ELEMENTARY SCHOOL** - Art teachers and student volunteers from Elmwood lead junior art lovers in creating their own printmaking projects. Art supplies are provided.

KIDS' ART ACTIVITY TABLE #2 - sponsored by the **ROSEDALE PUBLIC LIBRARY** - Kids can enjoy making "poetry blackout" projects with help from the Rosedale Library staff. Art supplies are provided. Contact: Randalee Gross, www.bcpl.info

KIDS' ART ACTIVITY TABLE #3 - sponsored by the **LILLIAN HOLT PARK & CENTER FOR THE ARTS** - A variety of fun crafts projects are available for kids, with help from the Holt Park Center staff. Art supplies are provided. Contact: www.facebook.com/HoltCenter

ALL AGES ACTIVITY TABLE - sponsored by **ARTIST & CRAFTSMAN SUPPLY*** - Let your imagination make a statement, and create your own 'wearable art' buttons at this all-ages activity table. Pin buttons and art supplies provided. Contact: Sarah Paggi, www.artistcraftsman.com

*Artist & Craftsman is also a juried artist prize donor



PERFORMANCE SCHEDULE

PRESENTATION ROOM

- 10:20 – 10:40 AM St. Michael's Children's Choir - www.stmichaelsoverlea.org
- 10:50 - 11:05 AM Handbell Ensemble - Elmwood Elementary School
- 11:20 – 11:40 AM Lucas Teles Novaes – Brazilian guitar - www.lucasnovaesart.com
- 12:00 – 12:45 PM Sherri Robbins - acoustic soul singer/songwriter/guitarist www.cdbaby.com/cd/sherrirobbins
- 1:00 – 2:00 PM **POETRY AND SPOKEN WORD PRESENTATIONS:**
- Marie Abate - www.pw.org/content/marie_abate
 - Jessica Lynn Dotson - www.jessicalynndotson.com
 - Fred Collins - 443-416-8069
 - Slangston Hughes - www.slangstonhughes7.wixsite.com/slickviclow/about
- 2:10 – 3:10 PM **SHORT FILM SCREENINGS** - local filmmakers
- 3:30 - 4:15 PM The Lushpockets - Baltimore garage rock
www.thelushpockets.bandcamp.com
- 4:25 – 4:55 PM Josie Baltimore - country/rock/doowop/soul singer
www.josiebaltimore.bandcamp.com
- 5:00 – 5:30 PM **AWARDS CEREMONY**
- 6:00 PM Event closes - "CHEERIO!"

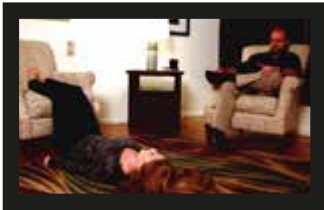
(times may vary slightly depending on lengths of actual performances)

THE PERFORMANCE SERIES AT OVERLEA ARTSFEST IS SPONSORED BY ROSEDALE FEDERAL SAVINGS & LOAN ASSOC.

Short Film

Artsfest

OVERLEA
2017



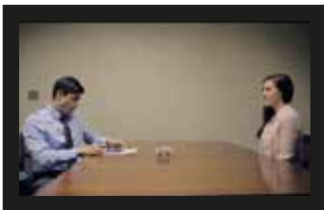
“The Dream”

Lorenzo Olson/Roaring Pictures – 2016



“Marci’s White Rabbit”

Danielle Gibson – 2016



“Terms and Conditions May Apply”

Ashleigh Coffelt – 2017



“Careful What You Wish For”

Ashleigh Coffelt – 2016



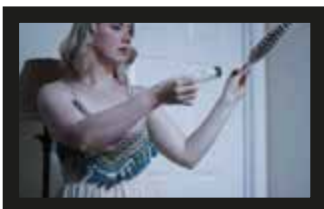
“A Godly Manner”

Donut Guy Productions – 2016



“The Sandi Connection Episode 2”

Lorenzo Olson/Roaring Pictures – 2016



“The Sandi Connection Episode 3”

Lorenzo Olson/Roaring Pictures – 2017



ART MARKET VENDORS

Most of the juried show artwork you see here today, as well as the guest artist's sculpture work in the outdoor sculpture garden, is for sale. Pricing is marked next to each piece. Ask a staff member for assistance if you are interested in purchasing a piece of artwork.

The following artists have vendor tables with hand crafted artwork and merchandise in the Activity Room:

ERIC BRISCOE – (also Juried Exhibitor) - Illustration drawings & paintings inspired by graphic comics and pop culture figures - www.instagram.com/briscoe_art/

BLAISE DEPAOLO – (also Juried Exhibitor) - Mosaic glass bowls, ceramic planters and vases, ceramic and tile plates - www.blaisedepaolo.com

OUT'A THE BOX: One of a Kind Creations - (also Event Performer) - Sherri Robbins - Handcrafted mixed media trinket boxes, frames & unique gifts - www.facebook.com/funkydeva

FIRESTORM ART STUDIO – Shayne & Jamie Stanley - Gemstone & crystal jewelry, gift items - www.jamiedragon99.wix.com/firestorm-art-studio

ArtsFest

OVERLEA
2017

GUEST ARTIST – ED GROSS

AWARD-WINNING 3-D SCULPTOR & MIXED MEDIA ARTIST

<http://edgrossart.com/>

We are proud to welcome Ed Gross as the Overlea ArtsFest Guest Artist for 2017. Ed is a visionary artist working in metal. He uses found objects that he repurposes into both decorative and functional art. The timeworn beauty of old farm implements, metal, and found objects that Gross has collected over 25 years helps form the vision for his work. He is a winner of a [2014 b-grant](#) from the Baker Foundation, and his work was exhibited along with other Baker Award winners at the Baltimore Museum of Art from September 16 - November 15, 2015.

Ed welcomes art gallery invites, commissions, studio visits, news stories, and collaboration with other artists. If you'd like to get in touch with Ed, please contact him at (301) 509-1171 or emg144@comcast.net.



Download Ed's Publicity Package ([Print/Interactive](#))

[Facebook](#) / [LinkedIn](#)



JURIED ART AND FILM EXHIBITORS

The following artists have been selected to compete in the Juried 2-D, 3-D and Short Film competition. They are listed by category, along with their contact information.

2-D REPRESENTATIONAL

Mike Bochenek - www.bartsymore.com
Marilyn Clutter - www.marilyn-clutter.pixels.com
Patricio Diaz - Instagram: [patodiaz_78](https://www.instagram.com/patodiaz_78)
Cody Pryseski - www.codypryseski.com
Steve Rowlands - steve@steverowlands.com
Stephanie Schafer - www.stephanieschafer.com
Megary Sigler - siglerm@rpcs.org
Peter Smith - Instagram: [Pablo2756](https://www.instagram.com/Pablo2756)
Grace Sweeney - www.graceartonline.com, Instagram: [graceartface](https://www.instagram.com/graceartface)
Zachary Titford - www.ZacharyTitford.com, Instagram: [Zacharytitford](https://www.instagram.com/Zacharytitford)
Karen Trimble - www.KarenTrimbleFineArt.com

2-D ABSTRACT

Benjamin Franklin - ben.franklin.balto@gmail.com
Thomas Groves - Instagram: [abstracted_artist](https://www.instagram.com/abstracted_artist)
Corey Grunert - coreysale@yahoo.com
Ashley VanGemeren - www.ashleyvangemeren.com, Instagram: [ashvangem](https://www.instagram.com/ashvangem)
Tanya Ziniewicz - www.paperandplate.com

2-D ILLUSTRATION

Eric Briscoe - www.facebook.com/eric.briscoe.16
Angela E. Burke - aeburke1953@gmail.com
Mark Redfield - www.MarkRedfieldArt.com
Bryan Robinson - www.theblackgeniusartshow.com, Instagram: [theblackgeniusartshow](https://www.instagram.com/theblackgeniusartshow)

2-D PHOTOGRAPHY

Austin Eisenhour - Instagram: [austineisenhour](https://www.instagram.com/austineisenhour)
Amanda Johnson - lemmakin@gmail.com
Shannon Katona - shannon.bzb@gmail.com
Kevin Moore - www.kbmoore@me.com, Instagram: [crabsandbeer](https://www.instagram.com/crabsandbeer)
Kimberly Olivier - kimbeehorse@yahoo.com
Brett Robinson - www.facebook.com/eyezoftheworldphotography
Stephanie Schafer - www.stephanieschafer.com
Narayan Shrestha - Instagram: [andyshrestha](https://www.instagram.com/andyshrestha)
George L. Smyth - www.hmphotoimages.com
Jon Wittman - www.jonwittmanphoto.smugmug.com, Instagram: [jonwittmanphoto](https://www.instagram.com/jonwittmanphoto)

3-D SCULPTURE

Blaise DePaolo - www.blaisedepaolo.com
Annie Farrar - www.anniefarrar.com, Instagram: [@barbrycat](https://www.instagram.com/@barbrycat)
Bob Godin - pinballbob999@gmail.com, www.facebook.com/bob.godin.98
Mike McKee - mmckee333@outlook.com
Marcia Wolfson Ray - www.marciawolfsonray.com
Darren Thompson, Jr. - darrendesigns19@gmail.com

3-D CERAMICS

Woojung Koh - www.facebook.com/woojung.ko1
Megary Sigler - siglerm@rpcs.org
Sarah-Anne Winchester - www.sawpottery.com, Instagram: [sarahanne.winchester](https://www.instagram.com/sarahanne.winchester)

SHORT FILMS & TRAILERS

Danielle Gibson - daniellegee13@gmail.com, Instagram: [daniellestories](https://www.instagram.com/daniellestories)
Matthew Myslinski / Donut Guy Productions - www.facebook.com/donutguyproductions
Lorenzo Olson / Roaring Pictures - www.vimeo.com/roaringpictures
Ashleigh Coffelt / Miss Ash Productions - www.missashproductions.com

Prize Donors for Juried Artists...



CHARMINGINGTON'S



BALTIMORE HOT YOGA — & wellness —



Carol Stover.com

Professional Makeup Artist
Photo Stylist - Speaker/Educator



the artthouse



TREE DECORATORS EXTRAORDINAIRE

For the week leading up to the ArtsFest, two wonderful ladies descended upon the row of trees lining the street outside the Natural History Society, and showered them with color and love. We hope you enjoyed it as much as the community of Overlea has!

Mary England and April Gomez were the creative forces behind our outdoor fantasy experience. It is our goal to begin to move outdoors and beyond with our annual arts festival, and they helped this year's attendees remember that creative expression has no boundaries.

Do stop and take a closer look at the tree art before you leave ArtsFest, and be sure to take a selfie posing alongside your favorite tree treatment.

DON'T FORGET TO TAG US USING @OVERLEAARTSFEST SO WE CAN SEE IT AND SHARE IT!



MARY

uncustomary.org



APRIL

www.aprilstwistedentertainment.com

[Check out the video!](#)

SEE YOU AT NEXT YEAR'S ARTSFEST!

The Overlea ArtsFest Committee & the Overlea Community Association